

LOC I-FOK	APP CRS	Rwy Idg	9000
111.7	236°	TDZE	66
		Apt Elev	67

ILS or LOC RWY 24

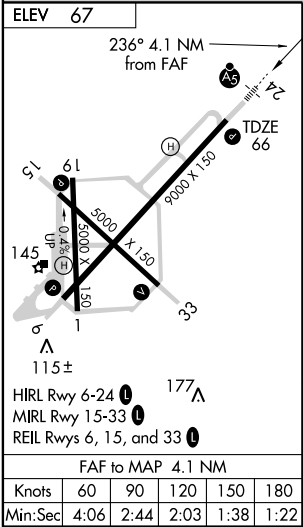
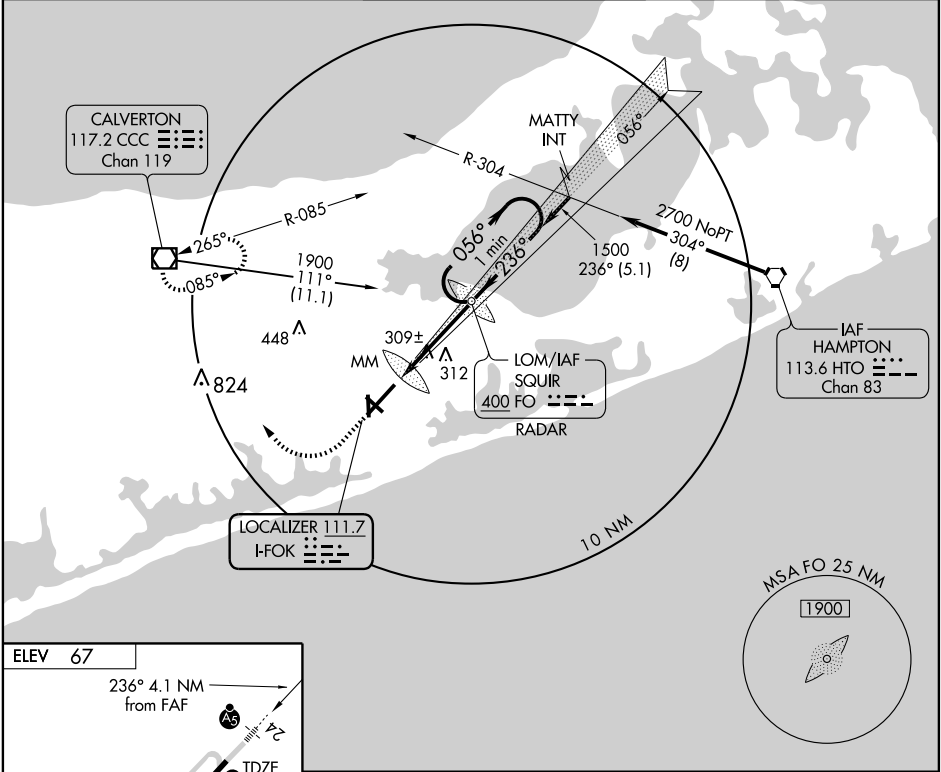
WESTHAMPTON BEACH/ FRANCIS S. GABRESKI (F'OK)

**⚠** If local altimeter setting not received, use Long Island MacArthur altimeter setting and increase all DA/MDAs 60 feet.

**MALSR**

**MISSED APPROACH:** Climb to 600 then climbing right turn to 2000 direct CCC VOR/DME and hold.

ASOS 119.925	NEW YORK APP CON 132.250 343.65	SUFFOLK COUNTY TOWER ★ 125.3 (CTAF) 0 236.6	GND CON 121.8 225.4	UNICOM 122.95
-----------------	------------------------------------	--	------------------------	------------------



600	2000	CCC 117.2	SQUIR LOM RADAR 1440	One Minute Holding Pattern
VGSI and descent angles not coincident.	MM	0.5	3.6 NM	1500
056°	236°	1700	GS 3.00° TCH 61	
CATEGORY	A	B	C	D
S-ILS 24	266-1/2	200 (200-1/2)		
S-LOC 24	560-1/2	494 (500-1/2)	560-3/4 494 (500-3/4)	560-1 494 (500-1)
CIRCLING	600-1 533 (600-1)	620-1 553 (600-1)	620-1 1/2 553 (600-1 1/2)	640-2 573 (600-2)

NE-2, 18 JAN 2007 to 15 FEB 2007

NE-2, 18 JAN 2007 to 15 FEB 2007